

Reduce Shrinkage With Integrated POS Security

Use POS Integration to Get More From Your Surveillance System



POS monitoring is used by 76% of retail companies to reduce internal shrink.

Retail Shrinkage

Employee theft continues to be the leading cause of shrinkage for retail establishments in the U.S., accounting for 38% of total lossesⁱ in 2006. Combined with shoplifting this number grows to over 70%. To reduce these losses, the majority of retail locations now use video surveillance to curb customer theft and monitor employees. But are they really using these systems to their full potential? Are they monitoring the right locations? Video security, with POS integration, offers retailers another method to reduce shrink and increase profitability.

A closed circuit television system is effective in combating employee theft and shoplifting by acting as both a deterrent and a documentation tool. To maximize their effectiveness, it is important to place the cameras in areas at the highest risk such as checkout lanes and customer service desks, where half of all employee theft is detected. Sales and service areas such as pharmacy, meats, health, beauty, and alcohol are all major hot spots for theft and shopliftingⁱⁱⁱ as well and should be priority locations for camera placement.

Surveillance should not be limited to the retail floor either. Back stock rooms, loading docs, cold storage areas, and offices are also likely locations for theft to occur.

When integrated with a POS software solution the performance of a surveillance system is maximized even further. POS Integration solutions provide a searchable database of transactions with the associated video attached, and can be used to search or monitor transactions in real time and curb negative performance trends by individual employees. Grocery outlets installing OpenEye's POS integration solution have seen losses due to employee theft reduced by up to 90% resulting in an overall reduction in total shrink of almost 30%. Installing a POS monitoring solution can quickly pay for itself with these kinds of results.



Grocery outlets installing OpenEye's POS integration solution have seen losses due to employee theft reduced by up to 90%.

POS monitoring is used by 76% of retail companies^{iv} to reduce internal shrink. OpenEye recorders and POS software integrate fully with most POS systems and can be managed locally or at a central location, using OpenEye's RADIUS remote management software to control and monitor multiple locations at once. OpenEye software allows users to view POS transactions overlaid onto surveillance video a transaction, quickly create custom searches, generate alarm events, display on-screen alerts, and flag video based on transaction information generated by the POS system. Now voids, cigarette/liquor sales, refunds, transactions exceeding a set amount and virtually any other variables can all be tracked with ease. By using OpenEye software and performing regular audits, suspicious or illegal activity can be documented and appropriate preventative measures can be taken.

Upgrading Your Existing Security System

If you have existing security equipment, upgrading is often as simple as replacing the existing recording unit with a new OpenEye recorder. You can connect your existing cameras to the new recorder, add new cameras to provide complete coverage of your retail location, and integrate with OpenEye's POS software to begin monitoring POS data in real-time.

OpenEye offers a range of hybrid video recorders and network video recorders to suit your needs. With models from 4 to 32 channels, OpenEye recorders can be utilized for installations both large and small. The DVR software allows you to create customized recording schedules and includes special day schedules that can be used for holidays, sales, or customer events. Included standard with every recorder is OpenEye's RADIUS multi-site remote management software, allowing the monitoring of multiple locations from a single station. RADIUS allows remote configuration, searching, backup and the allows users to create or import user defined maps with interactive camera and alarm locations. A POS upgrade option is available for RADIUS which offers real time video and transaction monitoring, searches based on transaction data, and video export with transaction data from the RADIUS software.

The OpenEye camera line includes fixed dome and PTZ cameras for use in different locations including cameras suitable for cold storage and outdoor use. Many of the fixed dome cameras have vari-focal lenses allowing the same camera model to work in many locations. Additional features include vandal proof enclosures and high resolution, telephoto, or wide dynamic range lenses.

i Food Marketing Institute, Research Department. Supermarket Security and Loss Prevention 2006 (Washington, DC: Food Marketing Institute, 2006), 6; ii, 20; iii, 12; iv, 21.

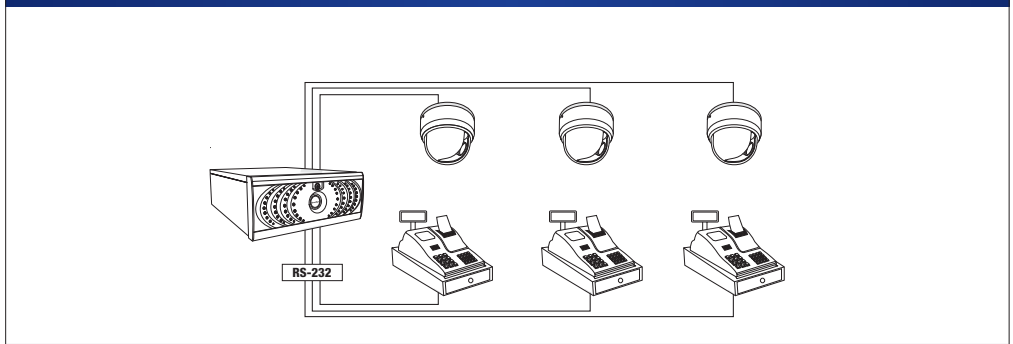
Supported RS-232 Registers

- Micros E-7
- Aloha via BOH
- VeriFone (Ruby/Sapphire)
- PC Based POS
- Toshiba TEC
- SIDG
- AVE (Text Inserter)
- HAT (Honeywell Text Inserter)
- Radiant Dunkin

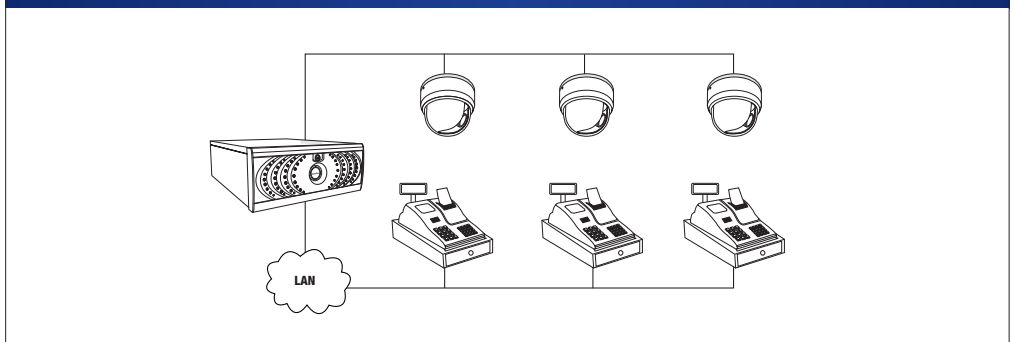
Supported TCP/IP Registers

- Micros 3700
 - Micros 9700
 - ACS (NCR)
 - ISS45 V7
 - POSitouch
 - IBM ACE
 - Retailx ScanMaster
 - Toshiba TEC
-

BASIC RS-232 CONFIGURATION



BASIC TCP/IP CONFIGURATION



Get more from your surveillance system and make it work harder for you. The OpenEye POS integration software can help you spot employee errors, trends, and monitor suspected theft. If you want to see what OpenEye software can do for your business, visit our web site at openeye.net or contact a sales representative at (888) 542-1103.