

## Quick Installation Guide OE-RWS2M-OWS Remote Workstation

This guide will assist you with the initial setup of your Remote Workstation. This includes hardware setup and initial login.

### SETTING UP YOUR RECORDER FOR THE FIRST TIME

1. Connect the network cable intended for remote connections to the **Client NIC**.
2. Connect the supplied **keyboard** and **mouse** using the USB ports.
3. Connect your **monitor(s)** using the HDMI ports.
4. Connect the **power cord** to the PC, followed by a power source.

### Launching Command Station

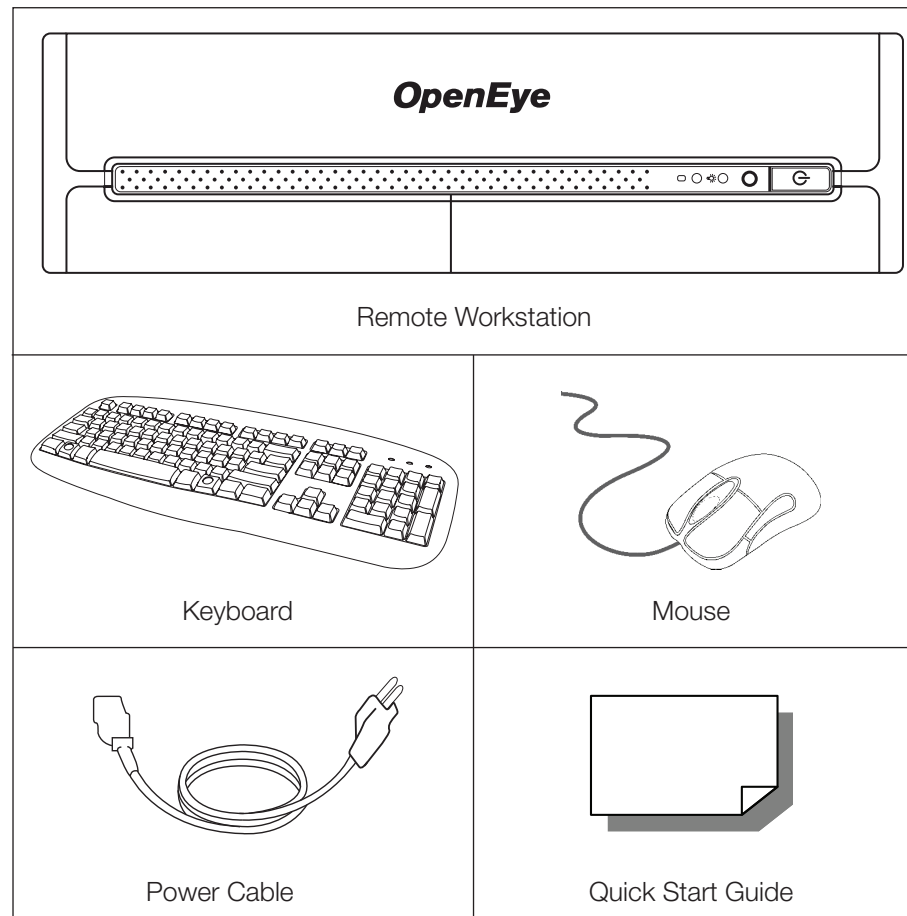
Command Station Remote Software is pre-installed on your PC. You can find the program from the Windows Start Menu and begin using the software immediately. You will need your OWS credentials to log-in to Command Station.

1. Click Start > All Programs > OpenEye > Command Station.
2. Enter your OWS credentials as your **Username** and **Password**, and then click **Login**.

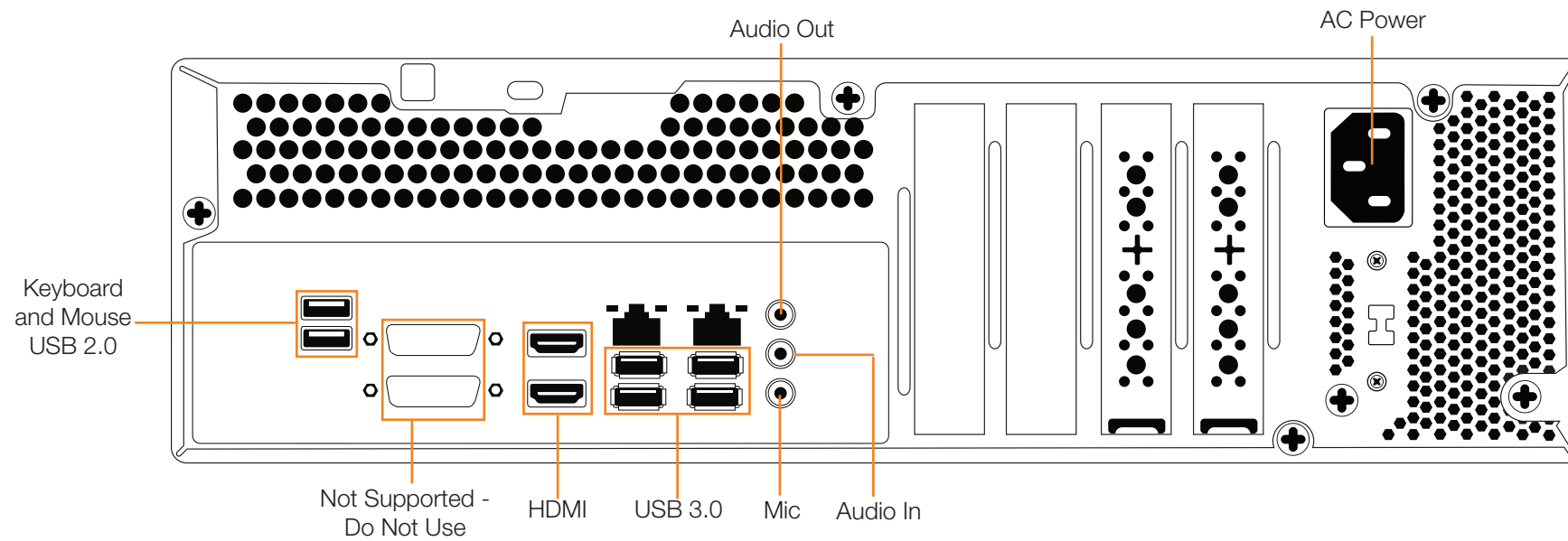
### Your OpenEye Web Services (OWS) Account

OpenEye Web Services is a cloud based management solution which allows you to administer all your users, recorders, and VMS installations from one central location. To begin using Command Station, you will need an OWS account.

### BOX CONTENTS



### REMOTE WORKSTATION CONNECTIONS



### Connecting Multiple Monitors

1. You can connect up to two monitors to the motherboard for a maximum of two 1080p monitors.
2. Right-click the Desktop and then click **Display Settings**.
3. Drag the icons for your monitors into the desired positions. If all of your monitors are not displayed, click **Detect**. If you need help determining the number assigned to each monitor, click **Identify** and the number will display on the monitor.
4. In the **Multiple Displays** field, select **Extend these displays**.
5. Select the appropriate resolution for each monitor by selecting the monitor icon, and then selecting the **Resolution**.
6. When configuring the primary monitor, select the **Make this my main display** check box.

### Supported Streams

OE-RWS2M-OWS*		
RESOLUTION	MAX VIDEO STREAMS	GPU CHANNEL DECODING
352x240	128	20
720x480	98	20
1MP	50	16
2MP	20	10
4MP	8	2
8MP	8	2

\*OE-RWS2M-CS supports 2 monitors with specified maximum stream configurations / Refer to the Command Station Software Manual to configure GPU decoding

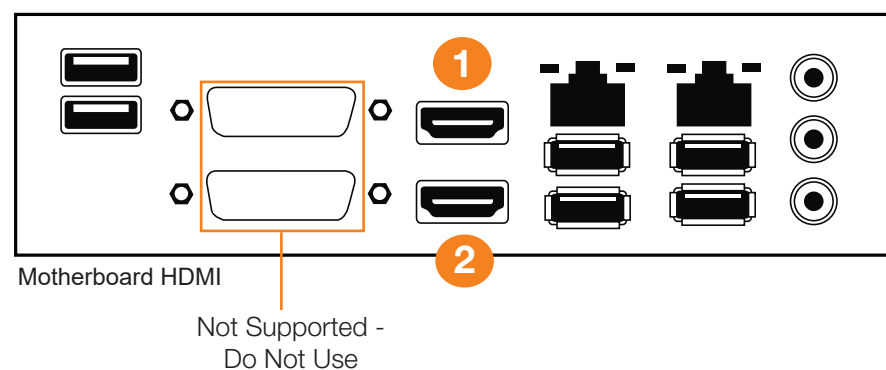
### Supported 2-Monitor Connection Order

When connecting multiple monitors to your Remote Workstation, the supported configuration is as follows:

1. Onboard HDMI
2. Onboard HDMI



**NOTE** The on-board HDMI ports support up to 1080p max.



# Quick Installation Guide

## OE-RWS4M-CS Remote Workstation

This guide will assist you with the initial setup of your Remote Workstation. This includes hardware setup and initial login.

### SETTING UP YOUR RECORDER FOR THE FIRST TIME

1. Connect the network cable intended for remote connections to the Client NIC.
2. Connect the supplied keyboard and mouse using the USB ports.
3. Connect your monitor(s) using the HDMI or DisplayPorts on the video card.
4. Connect the power cord to the PC, followed by a power source.

#### Launching Command Station

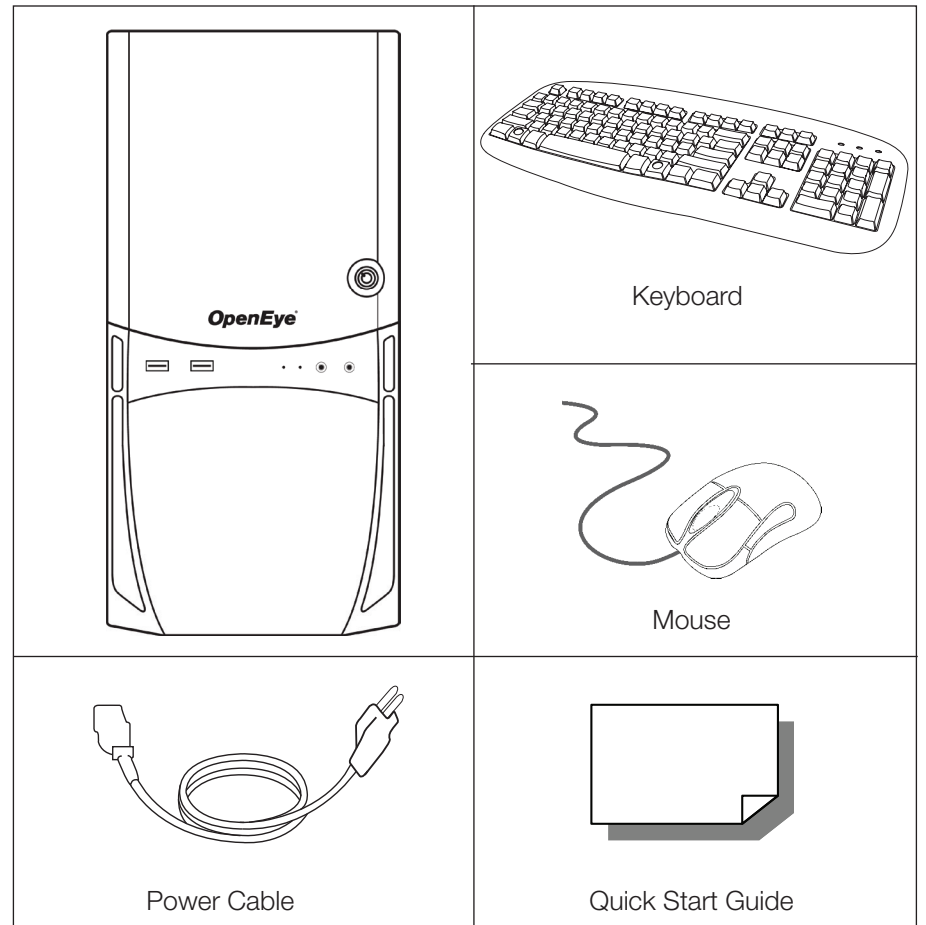
Command Station Remote Software is pre-installed on your PC. You can find the program from the Windows Start Menu and begin using the software immediately. You will need your OWS credentials to log-in to Command Station.

1. Click Start > All Programs > OpenEye > Command Station.
2. Enter your OWS credentials as your **Username** and **Password**, and then click **Login**.

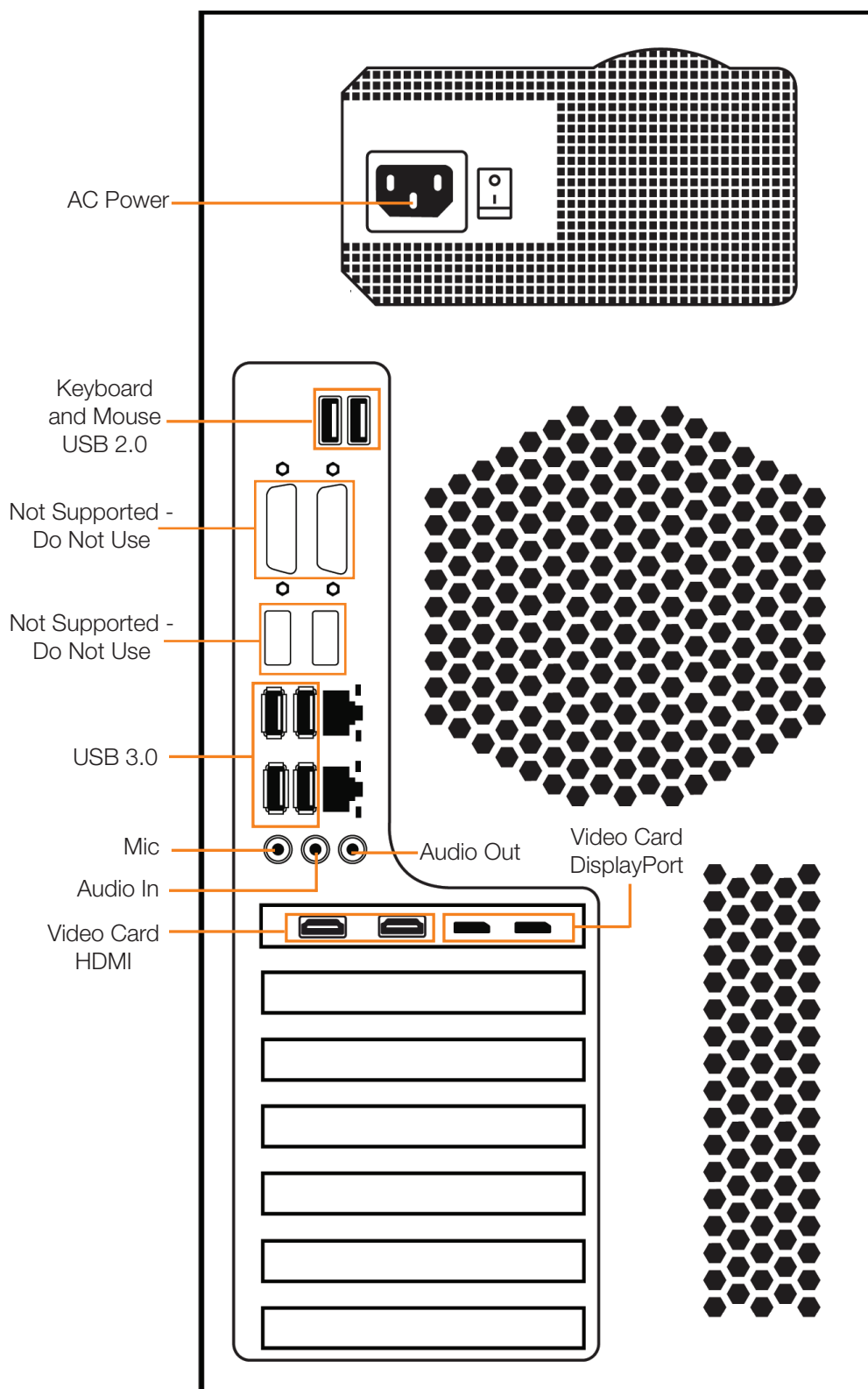
#### Your OpenEye Web Services (OWS) Account

OpenEye Web Services is a cloud based management solution which allows you to administer all your users, recorders, and VMS installations from one central location. To begin using Command Station, you will need an OWS account.

### BOX CONTENTS



### REMOTE WORKSTATION CONNECTIONS



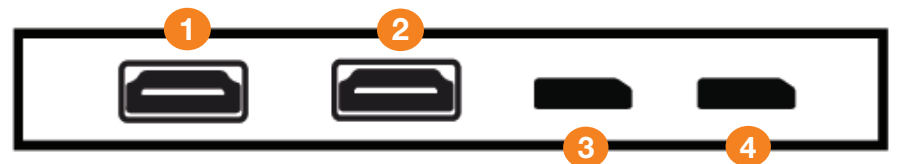
#### Connecting Multiple Monitors

1. Connect the monitors to the appropriate ports. For four-port models, you can connect up to four 4k monitors to the video card.
2. Right-click the Desktop and then click **Display Settings**.
3. Drag the icons for your monitors into the desired positions. If all of your monitors are not displayed, click **Detect**. If you need help determining the number assigned to each monitor, click **Identify** and the number will display on the monitor.
4. In the **Multiple Displays** field, select **Extend these displays**.
5. Select the appropriate resolution for each monitor by selecting the monitor icon, and then selecting the **Resolution**.
6. When configuring the primary monitor, select the **Make this my main display** check box.

#### Supported 4-Monitor Connection Order

When connecting multiple monitors to your Remote Workstation, the supported configuration is as follows:

1. Video Card HDMI
2. Video Card HDMI
3. Video Card DisplayPort
4. Video Card DisplayPort



#### Supported Streams

OE-RWS4M-CS*		
RESOLUTION	MAX VIDEO STREAMS	GPU CHANNEL DECODING
352x240	162	20
720x480	125	20
1MP	81	16
2MP	64	16
4MP	36	16
8MP	16	8

\*OE-RWS4M-CS supports 4 monitors w/ specified maximum stream configurations / Refer to the Command Station Software Manual to configure GPU decoding