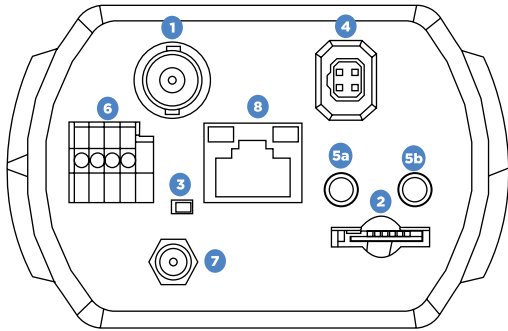


## CONNECTIONS



BNC	1	For analog video output
microSD Card Slot	2	Insert the microSD card into the card slot to store video and snapshots
Reset Button	3	Press the reset button with a proper tool for at least 20 seconds to return the camera to factory defaults
Auto Iris	4	Auto Iris lens connection
Audio I/O	5a	Line Out
	5b	Line In / Line Out
Alarm I/O	6	Alarm I/O block
Power (DC12V)	7	Alternate power supply to camera for non-PoE networks
RJ-45	8	For network and PoE connections

## PRODUCT FEATURES

### Camera

<b>Maximum Resolution</b>	4k/2k (8MP) 3840 x 2160
<b>Frame Rate at Maximum Resolution</b>	H.264 4k/2k @ 25/30 IPS
<b>Total Streams</b>	Quad Streaming
<b>ONVIF</b>	ONVIF Profile S Compliant
<b>Day/Night</b>	True Day / Night
<b>Wide Dynamic Range</b>	Digital WDR on / off
<b>Auto Back Focus</b>	Yes

### Environmental and Power

<b>Power Consumption</b>	8.5 W maximum
<b>Input Voltage</b>	DC12V / PoE
<b>Operating Temperature</b>	-40°C ~ 50°C (-40°F~122°F)

# OpenEye®

## QUICK START GUIDE

### OE-C9518 | 8MP (4K) Box IP Camera

This quick start guide is a reference for users to install and operate your OpenEye camera and only provides basic information on the camera's settings and operation. Before attempting to connect, configure and operate your OpenEye camera, please read the user manual thoroughly.

**OpenEye®**

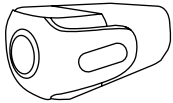
23221 E Knox Ave  
Liberty Lake, WA 99019  
509.232.5261  
www.openeye.net

Copyright ©2015 OpenEye.  
All Rights Reserved. Information contained in this document is subject to change without prior notice. OpenEye does its best to provide accurate information but cannot be held responsible for typos or mistakes.

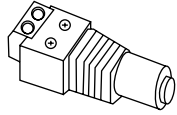
33476AB

www.openeye.net

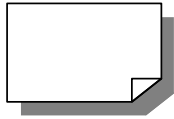
## BOX CONTENTS



IP Box Camera



Power Switch Connector

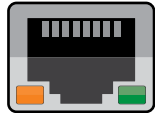


Quick Start Guide

## ETHERNET CABLE CONNECTIONS

Connect a network cable to the camera using the RJ45 input and connect the other end of the cable to your network switch or recorder.

Check the status of the network connection by looking at the link and activity LEDs. If the LEDs are not lit, check your network connection. The green link LED indicates a network connection and the orange activity LED flashes to indicate network activity.



**NOTE** If you are connecting the camera directly to a recorder, a crossover cable is necessary for most configurations.

## POWER

This camera is compatible with 12VDC and Power over Ethernet (PoE+). Connect power to the camera using the provided power connector lead, or the terminal connector blocks. If you are connecting 12VDC power, verify the polarity of the power connection. If you are using PoE+, make sure the Power Sourcing Equipment (PSE) is in use in the network.

## CONNECTING TO THE IP CAMERA

To access the camera setup menu, you need to install the OpenEye Network Camera Manager on a PC on the same network. To install the OpenEye Network Camera Manager application on your PC, download the program from [Openeye.net](http://Openeye.net), and follow the prompts.

1. Open **Network Camera Manager**, and click **Find Devices**.
2. Locate your camera on the **Network Camera Manager** list.
3. To open the viewer software in your web browser, double-click the camera, and then click **Browse**.

The first time you connect to the camera you will be automatically prompted to install a plugin to view live video.



**NOTE** ActiveX controller is for use with Internet Explorer only. Use the QuickTime plugin with other web browsers.

### Default Username and Password

The username and password are case sensitive. It is strongly recommended that the password be changed after the initial setup to prevent unauthorized access. Any password change will need to be applied to your recorder also.

Username: **admin**  
Password: **1234**

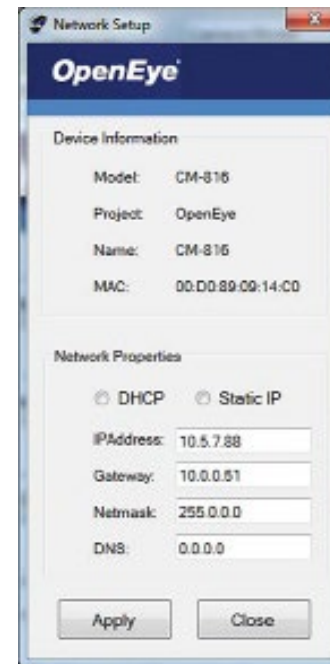
## ASSIGNING AN IP ADDRESS

OpenEye IP cameras default to DHCP. This automatically assigns an IP address to the camera. If no DHCP is available, the camera will default to a static IP of 192.168.0.250 after four minutes. To modify the IP address, use the OpenEye Network Camera Manager.



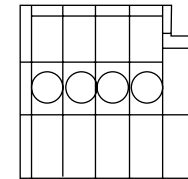
**TIP** Static IP is the recommended default.

1. Open the Network Camera Manager application.
2. Click **Find Devices**, and then double-click your camera.
3. Click **Network Setup**.
4. Select **Static IP** and type the new IP address and other network information in the appropriate boxes.  
- or -  
Select **DHCP**.
5. Click **Apply**.
6. Click **OK** to acknowledge the change.



## ALARM I/O ARRANGEMENT

The camera supports one alarm input and one relay output for alarm application.



1	Alarm Out +
2	Alarm In -
3	Alarm Out +
4	Alarm In -

4 3 2 1

## LENS ATTACHMENT

To attach the lens, remove the cover from the lens fixture on the body of the camera, and then attach the lens by screwing it onto the fixture. Be careful not to touch the photosensor inside the body of the camera. Once the lens is attached, remove the lens cap.

Optional Lenses:  
**OE-CAL3610CS**

