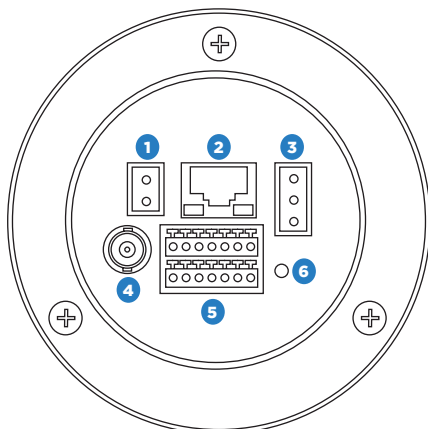


## CONNECTIONS

24vAC / PoE+



Power (12vDC)	1	Power supply to camera for non-PoE installations
RJ-45	2	For network and PoE+ connections
Power (24vAC)	3	Power supply to camera for non-PoE installations
BNC	4	For analog video output
I/O Connections	5	Alarm, Audio and RS-485 I/O connections
Reset Button	6	To restore the camera to factory defaults: 1. Disconnect power for 30 seconds. 2. Reconnect power and wait 30 seconds. 3. Press the reset button with a proper tool for 20 seconds.
MicroSD Card Slot (under dome)		Supports up to 128GB microSD card for Edge storage. <b>Do not add or remove the microSD card when the camera is powered on.</b>

## PRODUCT FEATURES

Camera	
Maximum Resolution	2048x1536
Frame Rate at Maximum Resolution	30FPS - H.264/H.265
Total Streams	Quad Streaming
ONVIF	Profile S / G / T
Day/Night	True Day/Night
Wide Dynamic Range	True WDR

Environmental and Power	
Power Consumption	25.4W
Input Voltage	802.3at PoE+ / AC 24V ± 10%
Operating Temperature	-40°~122°F (-40°~50°C)
IP Rating	IP66
Impact Rating	IK10

**OpenEye**<sup>®</sup>

The Cloud Video Platform

Liberty Lake, WA, USA  
509.232.5261

openeye.net

Copyright ©2020 OpenEye.  
All Rights Reserved. Information contained in this document is subject to change without prior notice. OpenEye does its best to provide accurate information but cannot be held responsible for typos or mistakes.

**OpenEye**<sup>®</sup>

**QUICK START GUIDE**

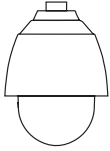
**OE-C8213 | 3MP IP PTZ Dome Camera**

This quick start guide provides only basic information on the camera's settings and operation for initial installation. Please read the user manual for optimal camera configurations.

36832AF

openeye.net

## CONTENTS



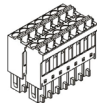
OE-C8213 IP PTZ Camera



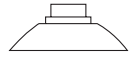
Mount Lock Screw



Security Torx Tool



Alarm and RS-485 I/O Block



Threaded Pendant Mount



3-Pin Terminal Power Block

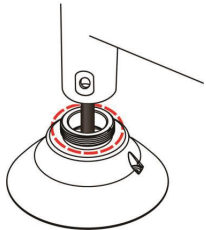


2-Pin Terminal Power Block



Threaded Mount Adapter

## SEALING THREADED CONNECTIONS



To ensure a watertight seal, the cable entry hole of the outdoor mounting kit needs to be sealed with thread seal tape to avoid water from entering the camera.

## POWER

This camera is compatible with 12vDC, 24vAC and Power over Ethernet (PoE). Connect power to the camera using the terminal connector blocks. If you are connecting 12vDC power, verify the polarity of the power connection.

**CAUTION:** Risk of explosion of battery is replaced by an incorrect type. Dispose of used batteries according to the instructions.

## DEFAULT USERNAME AND PASSWORD



**NOTE:** OpenEye IP cameras ship without a default password.

The admin user password can be set using the following methods:

- OpenEye recorders running Apex 2.1 or newer will automatically set a new unique password if:
  - Connected to an M-Series recorder with a built in PoE switch.
  - Connected to a network switch through the camera network port and selected then added in setup, if a new password has not already been set.

- Connect to the camera directly through a Web Browser and follow the onscreen prompts.
- Use the Network Camera Manager (NCM) Utility.

Username: **admin**



**NOTE:** The NCM software manual can be found at <https://www.openeye.net/ncm-manual>



**NOTE:** Refer to your Apex recorder manual or quick start guide for instruction on adding cameras. Passwords must be 8-16 characters, contain at least 1 capital and 1 lower case letter, 1 number, and 1 unique character.

## ASSIGNING AN IP ADDRESS

OpenEye IP cameras are set to DHCP by default. If a DHCP server is not detected after 4 minutes, the camera will default to IP address 192.168.51.2. If you are not using a DHCP server, NCM will allow you to batch configure a static IP address.

The IP address for the camera network on your Apex recorder is 192.168.51.1.



**NOTE:** To change this IP address please refer to your Apex recorder manual.

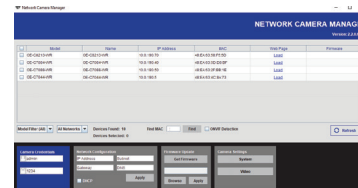
Selecting multiple cameras and entering IP address 192.168.51.2 will set an IP address on all selected cameras, starting at 192.168.51.2 and increase per camera.

- Open the Network Camera Manager.
- Select applicable camera(s).



**TIP:** Static IP is the recommended default.

- Input starting IP address, Subnet Mask, Gateway, DNS.
- Apply changes.
- Wait 60 seconds before refreshing NCM.



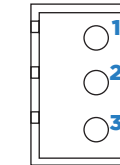
## CONNECTING TO THE IP CAMERA

To access the camera setup menu, you need to open the Network Camera Manager (NCM) utility. NCM is pre-installed on all OpenEye Recorders, and is also available for download on the OpenEye website for installation on your personal computer or laptop.

- Open **Network Camera Manager**.
- Locate your camera on the **Network Camera Manager** list.

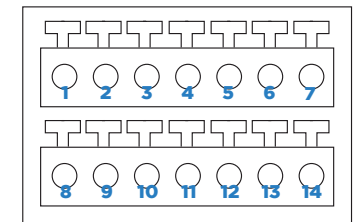
## POWER CONNECTION

To power the camera, connect the 24vAC adaptor to the power connector on the camera. Alternatively, users can use PoE to power the camera if a PoE+ switch is available.



1	AC24V L
2	GND
3	AC24V N

## Alarm I/O Connection



1	Audio Out	8	RS-485 D-
2	GND (Audio I/O)	9	Alarm In 4
3	Alarm Out A1	10	Alarm In 3
4	Alarm Out A2	11	Alarm In 2
5	Alarm Out B1	12	Alarm In 1
6	Alarm Out B2	13	GND (Alarm & RS-485)
7	RS-485 D+	14	Audio in