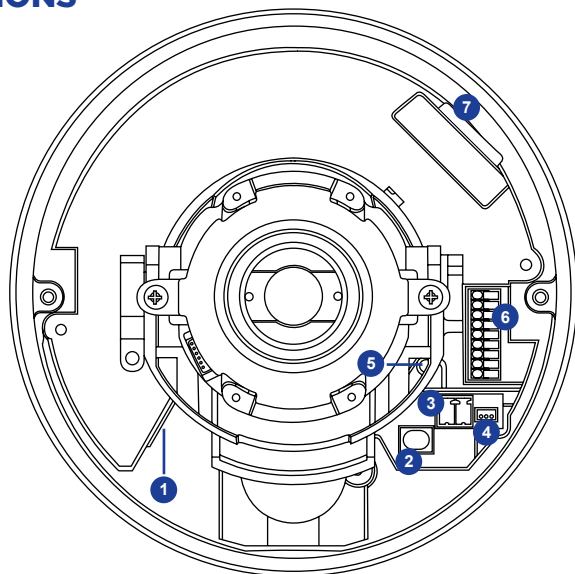


CONNECTIONS



1	RJ-45	For network and PoE connections		
2	BNC	1	For analog video output	
		2		
3	Power (12vDC / 24vAC)	1	Power connection	
		2		
4	RS-485	1	RS-485 connection	
		2		
		3		
5	Reset Button	Press the reset button with a proper tool for at least 20 seconds to return the camera to factory defaults		
6	Alarm & Audio I/O	1	Audio In L	Audio In
		2	Audio In R	
		3	GND	
		4	Audio Out L	Audio Out
		5	Audio Out R	
		6	Alarm Out +	Alarm connection
		7	Alarm Out -	
		8	Alarm In +	
		9	Alarm In -	
7	SD Card Slot	Insert the microSD card into the slot to store videos and snapshots		

OpenEye®

QUICK START GUIDE

OE-C6614-AWR | 4MP IP Dome Camera

This quick operation guide is a quick reference for users to install and operate the dome camera and only provides basic information on the camera's settings and operation. Before attempting to connect, configure and operate the dome camera, please read the user manual thoroughly.

OpenEye®

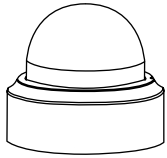
23221 E Knox Ave
Liberty Lake, WA 99019
509.232.5261
www.openeye.net

Copyright ©2016 OpenEye.
All Rights Reserved. Information contained in this document is subject to change without prior notice. OpenEye does its best to provide accurate information but cannot be held responsible for typos or mistakes.

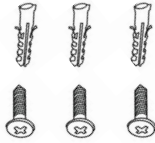
34825AB

www.openeye.net

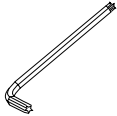
CONTENTS



OE-C6614-AWR
Dome Camera



Self-Tapping
Screws (x3) &
Plastic Anchors (x3)



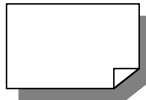
Security Torx
Tool



2-Pin Power
Terminal Block



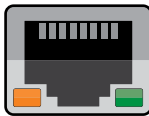
BNC Cable



Quick Start
Guide

ETHERNET CABLE CONNECTIONS

Connect a network cable to the camera using the RJ45 input and connect the other end of the cable to your network switch or recorder. Check the status of the network connection by looking at the link indicator and activity indicator LEDs. If the LEDs are not lit check your network connection. The green link LED indicates a network connection and the orange activity LED flashes to indicate network activity.



NOTE: If you are connecting the camera directly to a recorder, a crossover cable is necessary for most configurations.

POWER

This camera is compatible with 12vDC, 24vAV and Power over Ethernet (PoE). Connect power to the camera using the provided power connector lead, or the terminal connector blocks. If you are connecting 12vDC power, verify the polarity of the power connection. If you are using PoE, make sure the Power Sourcing Equipment (PSE) is in use in the network.

CONNECTING TO THE IP CAMERA

To access the camera setup menu, you need to install the OpenEye Network Camera Manager on a PC on the same network. To install the OpenEye Network Camera Manager application on your PC, download the program from Openeye.net, and follow the prompts.

1. Open **Network Camera Manager**, and click **Find Devices**.
2. Locate your camera on the **Network Camera Manager** list.
3. To open the viewer software in your web browser, double-click the camera, and then click **Browse**.

The first time you connect to the camera you will be automatically prompted to install a plugin to view live video.



NOTE ActiveX controller is for use with Internet Explorer only. Use the QuickTime plugin with other web browsers.

Default Username and Password

The username and password are case sensitive. It is strongly recommended that the password be changed after the initial setup to prevent unauthorized access. Any password change will need to be applied to your recorder also.

Username: **admin**
Password: **1234**

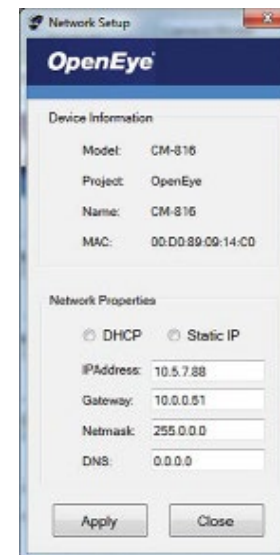
ASSIGNING AN IP ADDRESS

OpenEye IP cameras default to DHCP. This automatically assigns an IP address to the camera. If no DHCP is available, the camera will default to a static IP of 192.168.0.250 after four minutes. To modify the IP address, use the OpenEye Network Camera Manager.



TIP Static IP is the recommended default.

1. Open the Network Camera Manager application.
2. Click **Find Devices**, and then double-click the desired camera.
3. Click **Network Setup**.
4. Select **Static IP** and type the new IP address and other network information in the appropriate boxes.
- or -
Select **DHCP**.
5. Click **Apply**.
6. Click **OK** to acknowledge the change.



PRODUCT FEATURES

Camera	
Maximum Resolution	4MP
Frame Rate at Maximum Resolution	30IPS @ 4MP H.264
Total Streams	Quad Streaming
ONVIF	ONVIF Profile S Compliant
Day/Night	True Day / Night
Wide Dynamic Range	Shutter WDR on / off @ 3.6MP

Environmental and Power	
Power Consumption	8.1W
Input Voltage	12vDC / 24vAC / PoE
Operating Temperature	-22 ~ 122 °F (-30 ~ 50 °C)