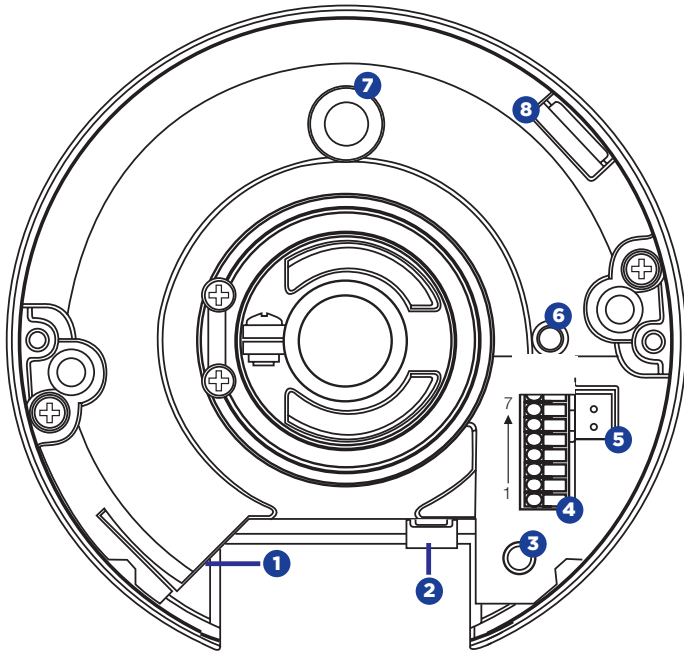


CONNECTIONS



1	RJ-45	-	For network and PoE connections		
2	Power (12vDC / 24vAC)	1	12vDC +	24vAC1	Power Connection
		2	GND -	24vAC2	
3	Reset Button	-	To restore the camera to factory defaults: 1. Disconnect power for 30 seconds. 2. Reconnect power and wait 30 seconds. 3. Press and hold the reset button for 20 seconds.		
4	Alarm & Audio I / O	1	Alarm Out +	Alarm connection	
		2	Alarm Out -		
		3	Alarm In +		
		4	Alarm In -	Ground connection	
		5	GND		
6	Audio Out	Two-way audio transmission			
7	Audio In				
5	BNC	-	For analog video output		
6	Built-in Microphone	-	Audio In		
7	Speaker	-	Audio Out		
8	microSD Card Slot	-	Insert the microSD card into the slot to store videos and snapshots		

OpenEye®

QUICK START GUIDE

OE-C6123-W | Micro IP Dome Camera

This quick start guide provides only basic information on the camera's settings and operation for initial installation. Please read the user manual for optimal camera configurations.

OpenEye®

The Cloud Video Platform

Liberty Lake, WA, USA
509.232.5261

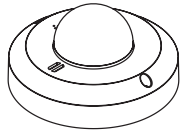
openeye.net

Copyright ©2020 OpenEye.
All Rights Reserved. Information contained in this document is subject to change without prior notice. OpenEye does its best to provide accurate information but cannot be held responsible for typos or mistakes.

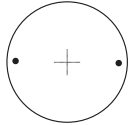
34815A1

openeye.net

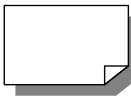
CONTENTS



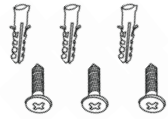
OE-C6123-W
Dome Camera



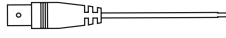
Mounting Template



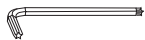
Quick Start
Guide



Self-Tapping
Screws (x3) &
Plastic Anchors (x3)



Power Cable



Security Torx
Tool



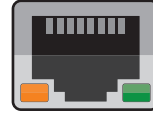
BNC Cable

ETHERNET CABLE CONNECTIONS

Connect a network cable to the camera using the RJ45 input and connect the other end of the cable to your network switch or recorder.

Check the status of the network connection by looking at the link indicator and activity indicator LEDs. If the LEDs are not lit check your network connection.

The green link LED indicates a network connection and the orange activity LED flashes to indicate network activity.



DEFAULT USERNAME AND PASSWORD

NOTE: OpenEye IP cameras ship without a default password.

The admin user password can be set using the following methods:

- OpenEye recorders running Apex 2.1 or newer will automatically set a new unique password if:
 - Connected to an M-Series recorder with a built in PoE switch.
 - Connected to a network switch through the camera network port and selected then added in setup, if a new password has not already been set.

- Connect to the camera directly through a Web Browser and follow the onscreen prompts.
- Use the Network Camera Manager (NCM) Utility.

Username: **admin**

NOTE: The NCM software manual can be found at <https://www.openeye.net/ncm-manual>



NOTE: Refer to your Apex recorder manual or quick start guide for instruction on adding cameras. Passwords must be 8-16 characters, contain at least 1 capital and 1 lowercase letter, 1 number, and 1 unique character.

ASSIGNING AN IP ADDRESS

OpenEye IP cameras are set to DHCP by default. If a DHCP server is not detected after 4 minutes, the camera will default to IP address 192.168.51.2. If you are not using a DHCP server, NCM will allow you to batch configure a static IP address.

The IP address for the camera network on your Apex recorder is 192.168.51.1.



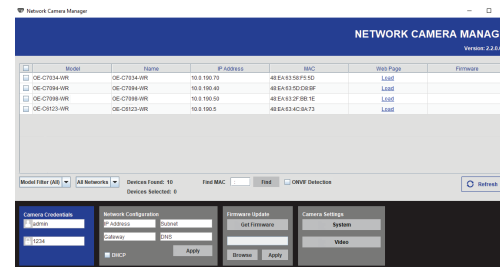
NOTE: To change this IP address please refer to your Apex recorder manual.

Selecting multiple cameras and entering IP address 192.168.51.2 will set an IP address on all selected cameras, starting at 192.168.51.2 and increase per camera.

- Open Network Camera Manager.
- Select applicable camera(s).
- Input starting IP address, Subnet Mask, Gateway, DNS.

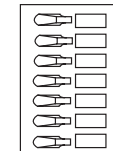


NOTE: NCM requires entry in all fields.



ALARM I/O ARRANGEMENT

The camera supports one alarm input and one relay output for alarm application. See the *Connections* diagram for the Alarm I/O location and orientation.



7	Audio In
6	Audio Out
5	Ground
4	Alarm In -
3	Alarm In +
2	Alarm Out -
1	Alarm Out +

- Apply changes.
- Wait 60 seconds before refreshing NCM.

CONNECTING TO THE IP CAMERA

To access the camera setup menu, you need to open Network Camera Manager (NCM) utility. NCM is pre-installed on all OpenEye Recorders, and is also available for download on the OpenEye website for installation on your personal computer or laptop.

- Open Network Camera Manager.
- Locate your camera on the Network Camera Manager list.
- To open the web browser, select the camera and click LOAD.

PRODUCT FEATURES

Camera	
Maximum Resolution	2560x1440 (3MP)
Frame Rate at Maximum Resolution	15FPS @ H.264
Total Streams	Up to 4 simultaneous streams
ONVIF	Profile S / G Compliant
Wide Dynamic Range	True WDR @ 2MP
Environmental and Power	
Power Consumption	3.7W Max
Input Voltage	12vDC / 24vAC / PoE
Operating Temperature	-4 ~ 131 °F (-20 ~ 55 °C)

INSTALLATION

- Apply template sticker to desired camera location.
- Drill anchor holes using included mounting template.
- Remove mounting template.
- Insert anchors.
- Mount camera.
- Adjust camera view.
- Secure Lid / dome

NOTE: This product is intended to be supplied by a Listed Power Adapter with LPS, rated 12Vdc, 1.08A or 24Vac, 0.38A, 50/60Hz or 50-60Hz or 48Vdc (PoE), 0.27A.

CAUTION: Risk of explosion of battery is replaced by an incorrect type. Dispose of used batteries according to the instructions.

The unit and all interconnected equipment must be installed indoors within the same building, including all PoE-powered network connections as described by Environment A of the IEEE 802.3af standard.