

OPENEYE NETWORK CAMERA MANAGER

USER MANUAL

Version 2.2

TABLE OF CONTENTS

- NETWORK CAMERA MANAGER SOFTWARE 3**
- Installation..... 3
- Launching Network Camera Manager..... 3
- Device Configuration 4
- WEB PAGE LOAD 4**
- FIRMWARE UPDATE..... 5**
- CAMERA CREDENTIALS 5**
- Camera Settings..... 5

NETWORK CAMERA MANAGER SOFTWARE

OpenEye Network Camera Manager is a software tool that allows you to quickly and easily connect and configure your OpenEye IP Cameras. This software allows you to assign IP addresses, manage users, configure video settings, and update firmware on multiple cameras at once.

INSTALLATION

LAUNCHING NETWORK CAMERA MANAGER

After installing the program on your PC or laptop, open the program to begin configuring your cameras.

<input type="checkbox"/>	Model	Name	IP Address	MAC	Web Page	Firmware
<input type="checkbox"/>	CM-816	CM-816	10.0.30.160	00:D0:89:0D:8E:76	Load	
<input type="checkbox"/>	HD30	HD30	10.0.30.152	00:D0:89:0D:9B:46	Load	
<input type="checkbox"/>	Server	Server	10.0.30.156		Load	
<input type="checkbox"/>	CAE08	CAE08	10.0.30.151	00:D0:89:11:27:E2	Load	
<input type="checkbox"/>	NV80-PS8	NVR	10.0.30.153	00:D0:89:13:3A:33	Load	
<input type="checkbox"/>	Not Defined	Not Defined	10.0.30.157	00:D0:89:13:70:A9	Load	

Model Filter (All) | All Networks | Devices Found: 1 | Find MAC | Find | ONVIF Detection | Refresh

Devices Selected: 0

Camera Credentials: admin, 1234

Network Configuration: IP Address, Subnet, Gateway, DNS, DHCP, Apply

Firmware Update: Get Firmware, Browse, Apply

Camera Settings: System, Video



Note Because Network Camera Manager is a Java application, you are able to install NCM on both Windows and Linux platforms. For Windows and Linux platforms, Network Camera Manager will be pre-installed on your recorder. Follow the instructions below to launch Network Camera Manager.

Launch from Windows

From the Windows Start menu, launch **Network Camera Manager** from the Network Device Manager folder.

Launch from Linux

In the local recorder **Cameras** setup page click the **Advanced** button to launch **Network Device Manager**.

DEVICE CONFIGURATION

Finding Network Devices

1. Check **ONVIF Detection** if discovery needs to find supported ONVIF devices.
2. Click **Refresh** to reload the Device List.
3. To narrow your search by Camera Model and Network Location, use the **Model Filter** and **All Networks** dropdowns.
4. Network Camera Manager can display the following information: **Model**, **Name**, **IP Address**, **MAC Address**, and **Firmware version**.



Note A Find MAC address search is also available if you are looking for a specific device.

Device List and Addresses Load in Web Browser Firmware Version

Model	Name	IP Address	MAC	Web Page	Firmware
CM-816	CM-816	10.0.30.160	00:D0:89:0D:8E:76	Load	
HD30	HD30	10.0.30.152	00:D0:89:0D:9B:46	Load	
Server	Server	10.0.30.156		Load	
CAE08	CAE08	10.0.30.151	00:D0:89:11:27:E2	Load	
NV80-PS8	NVR	10.0.30.153	00:D0:89:13:3A:33	Load	
Not Defined	Not Defined	10.0.30.157	00:D0:89:13:70:A9	Load	

All Networks Model Filter

Camera Credentials Network Configuration Firmware Update Camera Settings

Camera Credentials Network Configuration Firmware Update Camera Settings ONVIF Detection Refresh Device

WEB PAGE LOAD

Viewing a Network Devices Web Settings

1. Click the **Load** link in the row of the device.
2. Enter the **Username** and **Password** for the device. The username and password are case sensitive. It is strongly recommended that the password be changed after the initial setup to prevent unauthorized access.

FIRMWARE UPDATE

Firmware update options have the ability to pull current firmware versions from supported devices and upgrade them.

Get a Devices Firmware Version

1. Discover the device by hitting the **Refresh** button.
2. Once the device has been discovered select the device or check the box next to the model name to select it.
3. Click **Get Firmware** to get the device firmware version.

Upgrading a Devices Firmware

1. Discover the device by hitting the **Refresh** button.
2. Once the device has been discovered select the device or check the box next to the model name to select it.
3. Click **Get Firmware** to get the device firmware version.
4. Select **Browse** and navigate to the firmware file being used for device upgrade.
5. Click **Apply**.

CAMERA CREDENTIALS

Username and password are required to make changes to selected devices with Network Camera Manager.

Adding Device Credentials

1. Enter the username in the user field
2. Enter the password in the password field

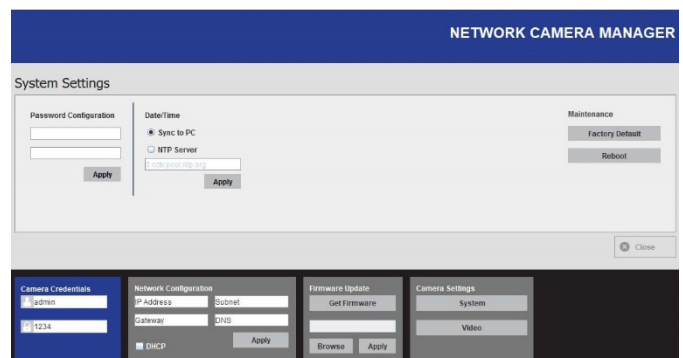
CAMERA SETTINGS

System

The System Settings menu allows you to change your Password, specify the Date / Time, and perform camera Maintenance.

Factory Default — Return device to original factory settings. This maintains the current firmware.

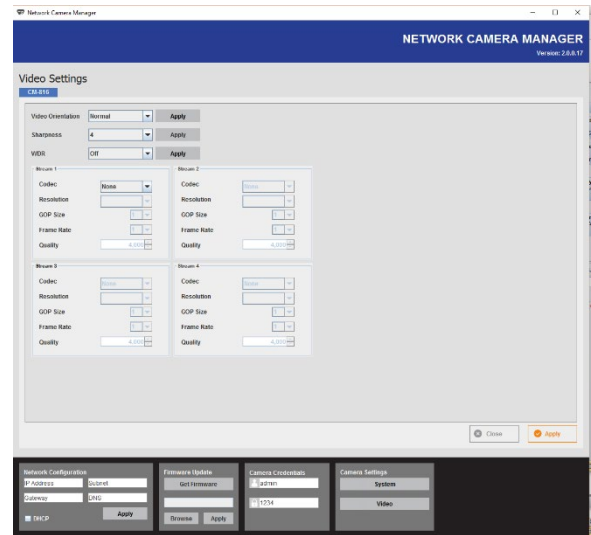
Reboot — Reboots the device.



Video

The Video Settings menu configures supported devices basic settings, including video orientation, sharpness, WDR, codec, resolution, GOP, FPS, and quality.

1. Use the dropdown menus to configure the supported options.
2. Click **Apply** next to certain options or **Apply** at the bottom of the window to save all changes.



www.openeye.net

1-888-542-1103

© 2019 OpenEye

All other rights are reserved to OPENEYE. OPENEYE, and OpenEye, are registered trademarks of OPENEYE in the United States and elsewhere. All other brand and product names are trademarks or registered trademarks of the respective owners.

31260AF